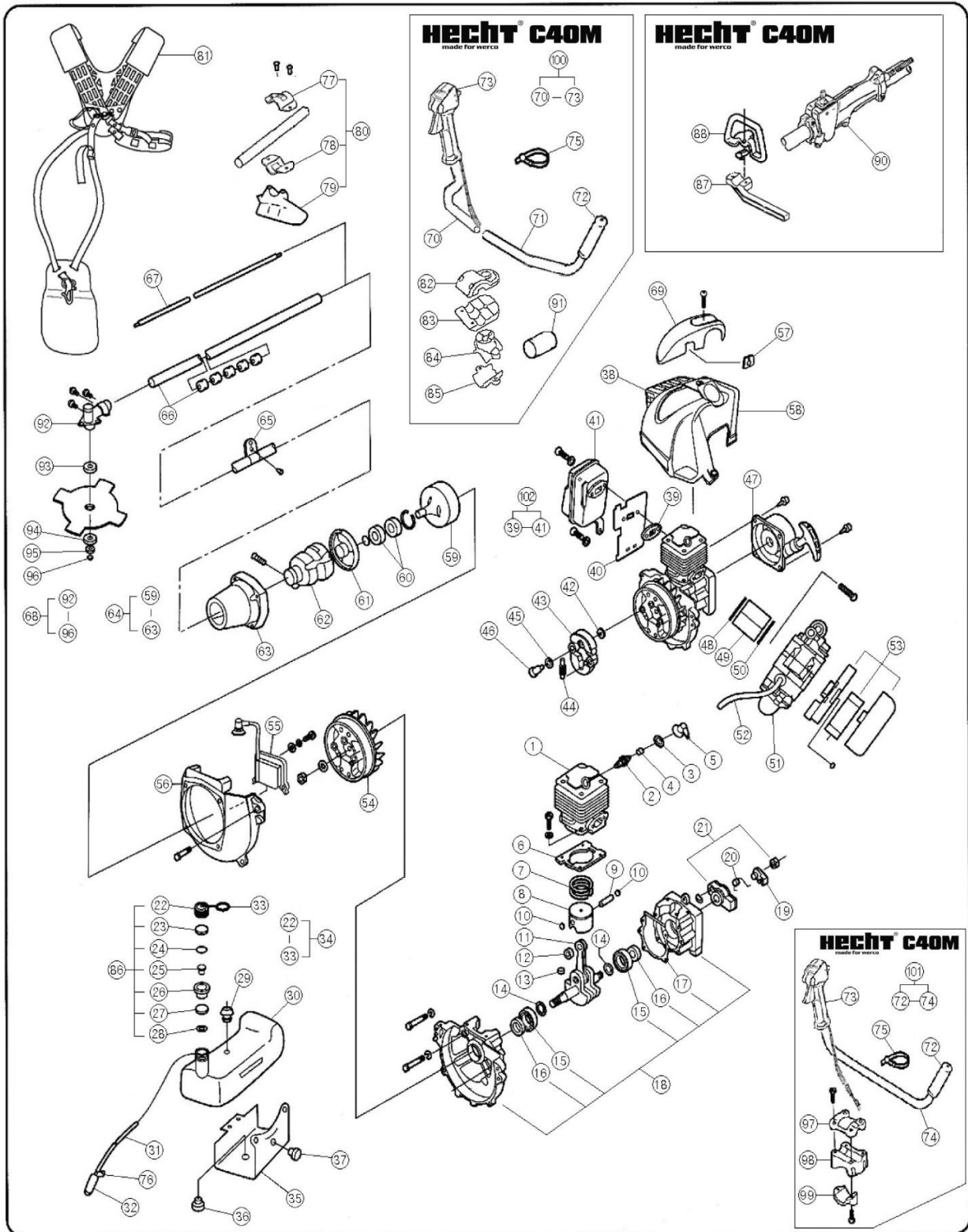


ENGINE BRUSH CUTTER

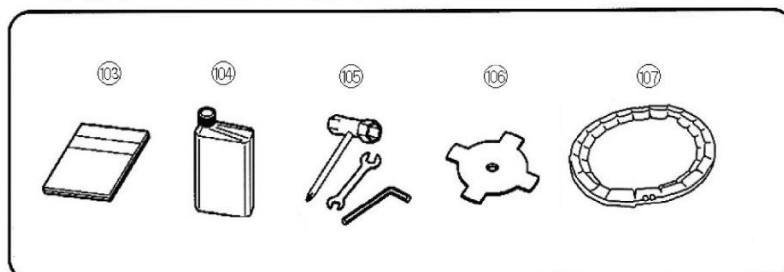
HECHT® C40M

made for werco

EXPLODED VIEW



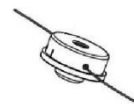
STANDARD ACCESSORIES



C40

Strunová hlava

722540M



ENGINE BRUSH

HECHT® C40M

made for werco

■ PARTS LIST

| NO | CODE | PART NAME | REMARKS | NO | CODE | PART NAME | REMARKS |
|----|----------|---------------------------|---------|-----|----------|----------------------------|---------|
| 1 | 610-0890 | CYLINDER | | 53 | 610-0170 | AIR CLEANER ASS'Y | |
| 2 | 610-2310 | SPARK PLUG | | 54 | 610-1875 | MAGNETO ASS'Y | |
| 3 | 610-2710 | SPARK PLUG RUBBER COVER | | 55 | 610-5695 | IGNITION COIL ASS'Y | |
| 4 | 610-2305 | CONTACT SPRING | | 56 | 610-5692 | FAN CASE | |
| 5 | 610-2705 | SPARK PLUG CAP | | 57 | 610-1480 | GROMMET, A | |
| 6 | 610-0880 | CYLINDER GASKET | | 58 | 610-5715 | CYLINDER COVER(REDF) | |
| 7 | 610-2235 | PISTON RING | | 58 | 610-5717 | CYLINDER COVER(GREEN) | |
| 8 | 610-2200 | PISTON COMP | | 59 | 610-0565 | CLUTCH DRUM ASS'Y | |
| 9 | 610-2230 | PISTON PIN | | 60 | 310-0120 | BALL BEARING | |
| 10 | 610-0500 | CIR-CLIP | | 61 | 610-0255 | BEARING HOUSING | |
| 11 | 610-0760 | CRANK SHAFT ASS'Y | | 62 | 610-0130 | A-V COMP | |
| 12 | 310-1105 | NEEDLE BEARING | | 63 | 610-0620 | CLUTCH HOUSING | |
| 13 | 610-1810 | WOOD-RUFF KEY | | 64 | 610-0605 | CLUTCH HOUSING ASS'Y | |
| 14 | 220-0160 | CRANK SHAFT WASHER | | 65 | 610-2850 | STRAP BRACKET | |
| 15 | 310-0090 | BALL BEARING | | 66 | 610-2130 | PIPE ASS'Y | |
| 16 | 610-2025 | OIL SEAL | | 67 | 610-2465 | RIGID SHAFT | |
| 17 | 610-1355 | CRANK GASKET | | 68 | 610-1395 | GEAR CASE ASS'Y | |
| 18 | 610-0720 | CRANK CASE ASS'Y | | 69 | 610-5725 | SPARK PLUG PROTECTOR | |
| 19 | 610-2380 | RATCHET | | 70 | 610-0085 | "W" PIPE, RH | |
| 20 | 610-2435 | RETURN SPRING | | 71 | 610-0080 | "W" PIPE, LH | |
| 21 | 610-2800 | STARTER PULLEY ASS'Y | | 72 | 610-1470 | GRIP-L | |
| 22 | 610-1265 | FUEL TANK CAP | | 73 | 610-3022 | THROTTLE TRIGGER ASS'Y-"U" | |
| 23 | 610-5675 | AIR CLEANER ELEMENT | | 74 | 610-0025 | "U" PIPE | |
| 24 | 620-0650 | PLATE | | 75 | 610-0235 | BAND | |
| 25 | 620-0105 | CHECK VALVE | | 76 | 620-0305 | FUEL HOSE CLIP | |
| 26 | 610-5660 | INNER CAP | | 77 | 610-4015 | UPPER PLATE | |
| 27 | 620-0775 | SMALL COVER | | 78 | 610-4010 | LOWER PLATE | |
| 28 | 610-1330 | GASKET-2 | | 79 | 610-4000 | SAFETY COVER | |
| 29 | 620-0310 | FUEL HOSE GASKET | | 80 | 610-4060 | SAFETY COVER ASS'Y | |
| 30 | 610-1295 | FUEL TANK | | 81 | 610-3041 | DOUBLE SHOULDER HARNESS | |
| 31 | 610-1205 | FUEL HOSE | | 82 | 610-0055 | "W"HANDLE BRACKET-C | |
| 32 | 610-1175 | FUEL FILTER | | 83 | 610-0060 | "W"HANDLE BRACKET-D | |
| 33 | 610-2430 | RETAINER | | 84 | 610-0045 | "W"HANDLE BRACKET-A | |
| 34 | 610-1250 | FUEL TANK ASS'Y | | 85 | 610-0050 | "W"HANDLE BRACKET-B | |
| 35 | 610-1260 | FUEL TANK BRACKET | | 86 | 610-2900 | FUEL TANK CAP ASS'Y | |
| 36 | 610-2540 | CUSHION RUBBER | | 87 | 610-4005 | BARRIER | |
| 37 | 610-0850 | CUSHION SCREW | | 88 | 620-0490 | LOOP HANDLE | |
| 38 | 610-5705 | MUFFLER PROTECTOR | | 90 | 610-3027 | THROTTLE TRIGGER ASS'Y-"L" | |
| 39 | 610-1985 | MUFFLER GASKET | | 91 | 610-0070 | A-V RUBBER(W-TYPE) | |
| 40 | 610-1510 | HEAT SHIELD | | 92 | 610-1395 | GEAR CASE BODY | |
| 41 | 610-1965 | MUFFLER COMP | | 93 | 610-1535 | INSIDE FLANGE | |
| 42 | 220-0080 | CLUTCH WASHER-B | | 94 | 610-1540 | OUTSIDE FLANGE | |
| 43 | 610-0625 | CLUTCH SET ASS'Y | | 95 | 610-1490 | CUP WASHER | |
| 44 | 610-0645 | CLUTCH SPRING | | 96 | 610-2565 | SAW LOCK NUT | |
| 45 | 220-0210 | WAVE WASHER | | 97 | 610-0010 | "U"HANDLE BRACKET-A | |
| 46 | 610-0655 | CLUTCH SETP BOLT | | 98 | 610-0015 | "U"HANDLE BRACKET-B | |
| 47 | 610-2410 | RECOIL STARTER BODY ASS'Y | | 99 | 610-0020 | "U"HANDLE BRACKET-C | |
| 48 | 610-1705 | INLET MANIFOLD GASKET | | 100 | 610-4080 | "W"HANDLE ASS'Y | |
| 49 | 610-1720 | INLET MANIFOLD | | 101 | 610-4070 | "U"HANDLE ASS'Y | |
| 50 | 610-0450 | CARBURETOR GASKET | | 102 | 610-1950 | MUFFLER ASS'Y | |
| 51 | 610-0415 | CARBURETOR ASS'Y | | | | | |
| 52 | 610-1645 | OVERFLOW HOSE | | | | | |

■ STANDARD ACCESSORIES

| NO | CODE | PART NAME | REMARKS | NO | CODE | PART NAME | REMARKS |
|-----|----------|------------------|---------|-----|----------|-------------|---------|
| 103 | 730-3050 | INSTRUCTION BOOK | | 106 | 610-0290 | BLADE ,4P | |
| 104 | 610-1225 | FUEL MIXER ASS'Y | | 107 | 610-3045 | BLADE COVER | |
| 105 | 610-3055 | TOOL KIT ASS'Y | | | | | |